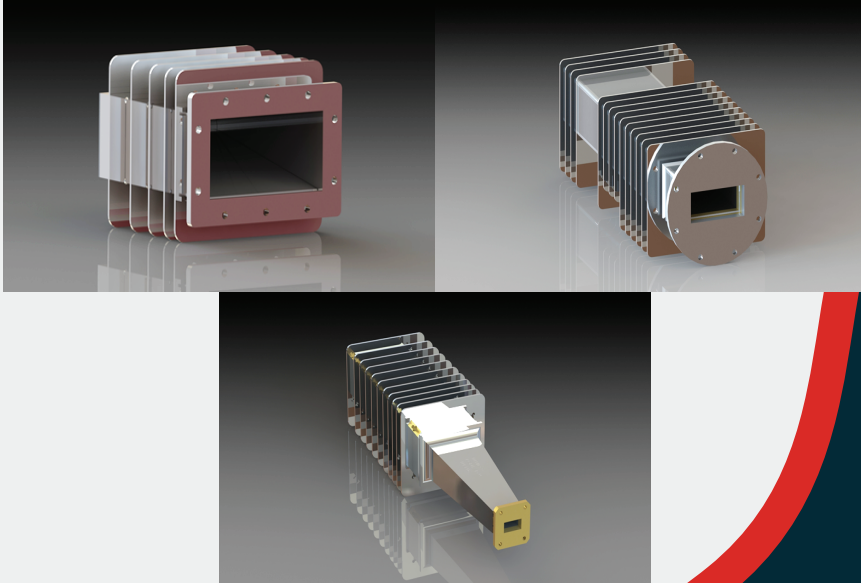


# High Power Terminations

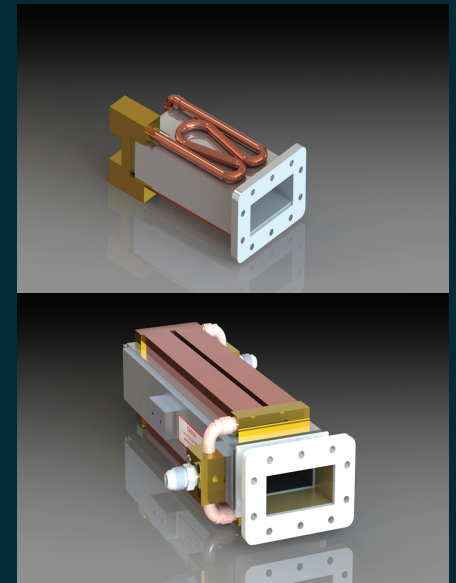
## Low to Medium Power



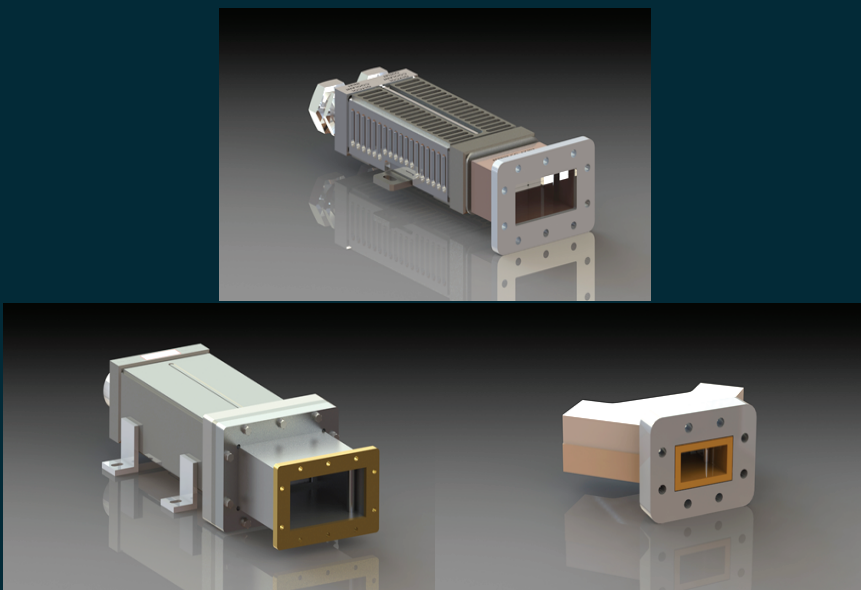
- Waveguide WR28 to WR2300
- Coaxial SMA to 9.1875"
- High Power Refractory Ceramic
- Broad band

## Medium to High Power

- Waveguide WR28 to WR2300
- Coaxial SMA to 9.1875"
- High Power Refractory Ceramic
- Broad Band



## High to Ultra-High Power

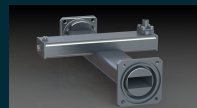
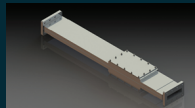
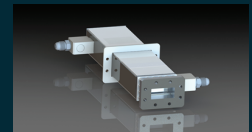
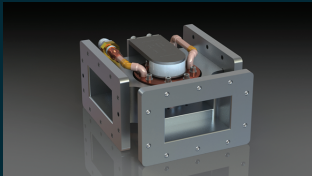
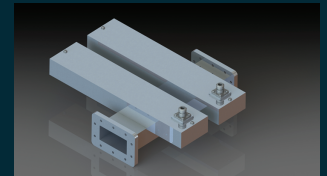
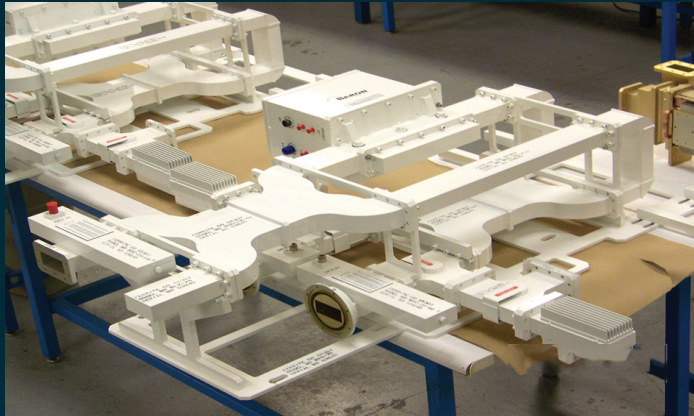
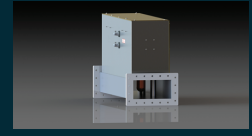
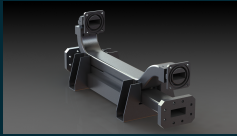
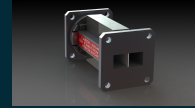


- Waveguide WR28 to WR1500
- Water or Water/Glycol absorption
- Narrow band / Spot Frequency

# Microwave Techniques, LLC

When failure isn't an option, our high power components provide you with unique capabilities in protection and detection.

## Integrated Microwave Assemblies



- Radar, Medical & Scientific Applications
- UHF, L, S, C, X, Ku, K & Ka Bands
- Waveguide and Coaxial
- Provided as complete assemblies or as "kits" with individual components tested separately

**Microwave**  
TECHNIQUES LLC

**MEGA** RF Solutions  
INDUSTRIES  
A MICROWAVE TECHNIQUES COMPANY  
ISO 9001 AS9100

**Ferrite**  
Microwave Technologies  
A MICROWAVE TECHNIQUES COMPANY

High Power Microwave Components & Systems

Microwave Techniques, LLC  
28 / 29 Sanford Drive, Gorham, ME 04038  
Phone: +1 (207) 854-1700  
sales@microwavetechniques.com  
www.microwavetechniques.com